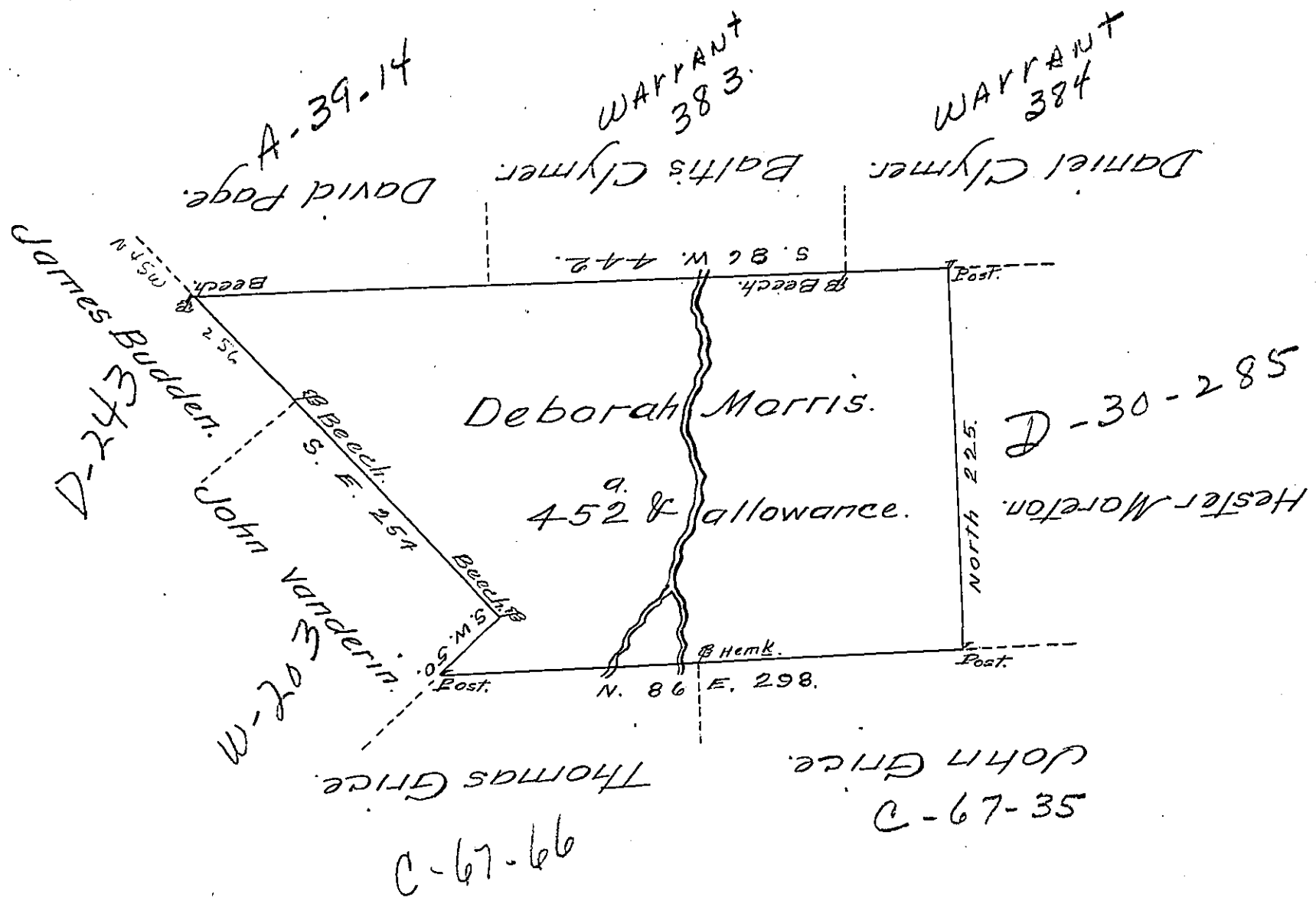


FORM NO 1.



A Draught of a Tract of Land Called _____
 Situate adjoining Land Surveyed for David Page and
 others in Luzerne (formerly Northumberland) Coun-
 ty, Containing four Hundred and fifty Two Acres and
 allowance of six & Cent for Roads &c. Surveyed for
 Deborah Morris on the 23^d day of October 1786
 in Pursuance of her Warrant dated the second
 day of July 1784

By W^m. Gray D.S.

To John Lukens Esq^r.
 Survey^r Gen^l. }

IN TESTIMONY that the above is a copy of the original remaining on file in
 the Department of Internal Affairs of Pennsylvania, made
 conformably to an Act of Assembly approved the 16th day of
 February, 1833, I have hereunto set my Hand and caused
 the Seal of said Department to be affixed at Harrisburg,
 this twenty sixth day of February 1908.

Henry Howell
 Secretary of Internal Affairs.